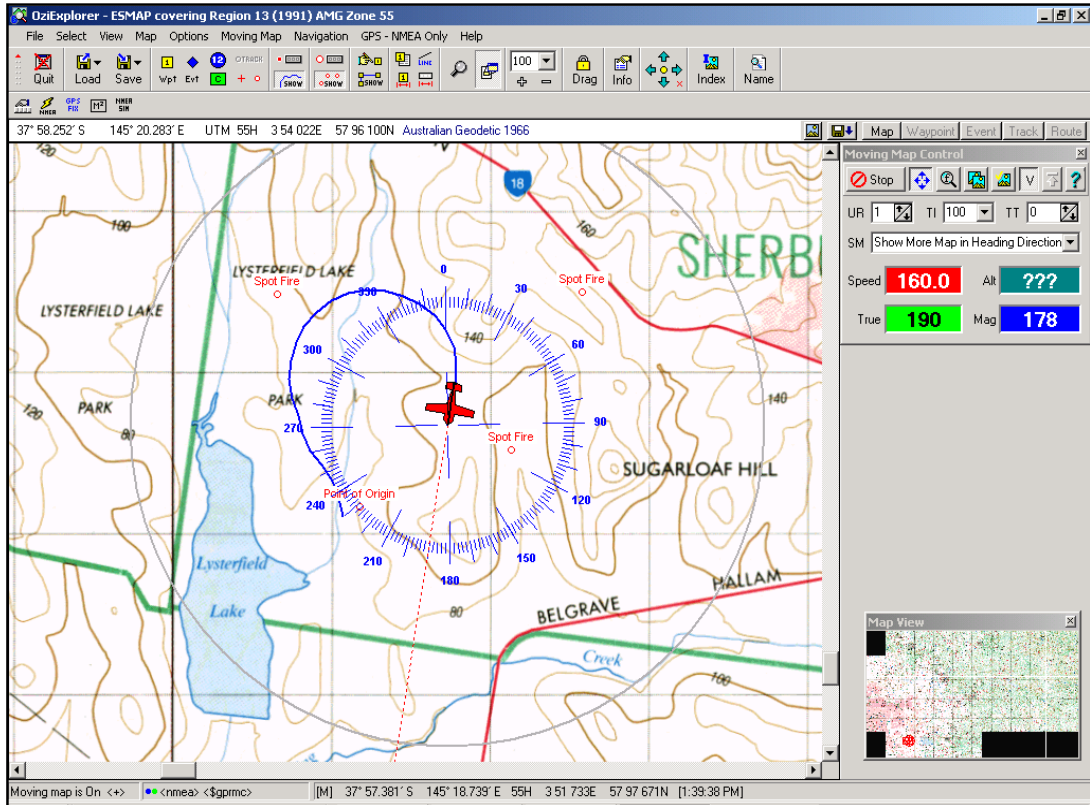


AIRBORNE FIRE MAPPING SYSTEM



OPERATOR'S MANUAL

Version 1.0

Based on the ARMS
Automated Real-Time Mapping Software
Concept



State Aircraft Unit



State Aircraft Unit – A joint fire agency initiative of the CFA and DSE providing specialist aviation resources for fire and land management

ACKNOWLEDGEMENTS

ARMS - *Automated Real-Time Mapping Software* was developed by the Department of Conservation and Natural Resources - Air Operations.

ARMS is a registered Trademark owned by the State of Victoria with the Secretary of DSE as the agent.

The Airborne Fire Mapping System has evolved from the ARMS Concept.

| | | |
|---|--|---|
| Concept: | Ray Gilbert | Region 24 |
| Design: | Ray Gilbert Gary Mynes John Leben Tim Lancaster | Region 24 Region 8 State Aircraft Unit State Aircraft Unit |
| Gel Cell Battery Concept and Design: | Peter Cuthbertson | State Aircraft Unit |
| Operators Manual: | Tim Lancaster | State Aircraft Unit |

Many thanks to everyone who assisted with this Project

| | |
|--------------------------------|--|
| Operations Officer John Leben | State Aircraft Unit |
| Operations Officer Paul King | CFA Region 24 |
| Fire Fighter Dave Brown | CFA Region 24 |
| Region 24 Air Ops Personnel | |
| Operations Manager Vince Bosua | CFA Operations Directorate |
| CFA Operations Directorate | |
| David Beards | CFA IT Department |
| Phil Pringuer | DSE |
| CFA GIS Services | |
| Chris Feltoe | CFA Operations Research and Development |
| Fire Fighter Gary Mynes | CFA Region 8 |
| Fire Fighter Ian Lilley | CFA Region 8 |
| Arms Kit Forum members | |

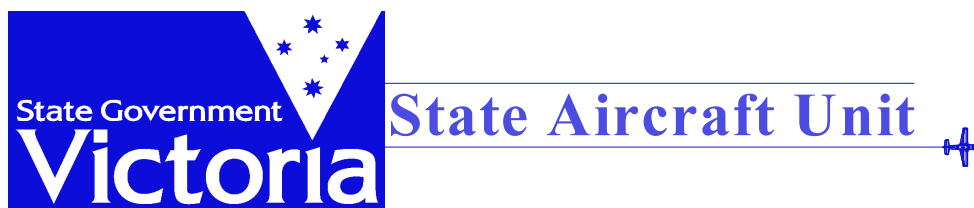


TABLE OF CONTENTS

| | |
|---|-----------|
| INTRODUCTION | 1 |
| CONDITIONS OF USE | 2 |
| AIRBORNE FIRE MAPPING SYSTEM | 2 |
| <i>Conditions of Use.....</i> | <i>2</i> |
| <i>Configuration Settings.....</i> | <i>2</i> |
| OZI EXPLORER | 2 |
| <i>Conditions of Use.....</i> | <i>2</i> |
| <i>License Conditions.....</i> | <i>2</i> |
| HOW THIS MANUAL IS WRITTEN..... | 3 |
| MOUSE USE..... | 3 |
| NUMBERED LISTS | 3 |
| NOTE | 3 |
| BATTERY USE | 4 |
| ACER COMPUTER BATTERIES..... | 4 |
| <i>Charging the Acer Battery.....</i> | <i>4</i> |
| GEL CELL BATTERY | 4 |
| <i>Charging the Gel Cell Battery.....</i> | <i>4</i> |
| SETTING UP THE KIT..... | 5 |
| STARTING THE KIT..... | 9 |
| LAUNCH AND FUNCTION KEYS | 10 |
| LAUNCH KEYS..... | 10 |
| OZI EXPLORER FUNCTION KEYS | 10 |
| OPENING OZI EXPLORER | 11 |
| LOADING A MAP | 12 |
| STARTING COMMUNICATIONS WITH GPS..... | 13 |
| SCROLING AND MOVING WITHIN THE MAP | 14 |
| CREATING A TRACK..... | 15 |
| NOTING THE DATE / TIME..... | 15 |
| CREATING POINTS..... | 16 |
| NOTING THE DATE / TIME..... | 17 |
| EDITING TRACKS AND POINTS | 18 |
| EDITING OR DELETING A TRACK | 18 |
| EDITING OR DELETING A POINT | 19 |
| SAVING A FILE..... | 20 |
| SAVING A TRACK FILE..... | 20 |
| SAVING A POINTS FILE | 22 |
| SENDING TRACK AND POINT FILES | 23 |
| PREPARING THE KIT FOR A MISSION..... | 24 |
| PREPARING AND TESTING THE KIT..... | 24 |
| <i>Battery Charging</i> | <i>24</i> |
| <i>ARMS Kit Case</i> | <i>24</i> |
| <i>Laptop Bag.....</i> | <i>25</i> |
| ICON GLOSSARY | 26 |

INTRODUCTION

The State Aircraft Unit Airborne Fire Mapping System is based on the original ARMS concept. The ARMS concept grew out of a requirement to efficiently and accurately map wild fires from the air.

The Airborne Fire Mapping System is designed to collect data from a GPS *Global Positioning System* and display the geographical information on an electronic map using Ozi Explorer Software. The data is transmitted via the CDMA data modem.

The kit is made up of a GPS, laptop computer, CDMA data modem, wireless optical mouse, Ozi Explorer 3.95 software, Microsoft Windows 2000 and State Aircraft Unit designed power supplies.

The kit is self-sustaining and can also use aircraft/vehicle power supplies if required as a backup.

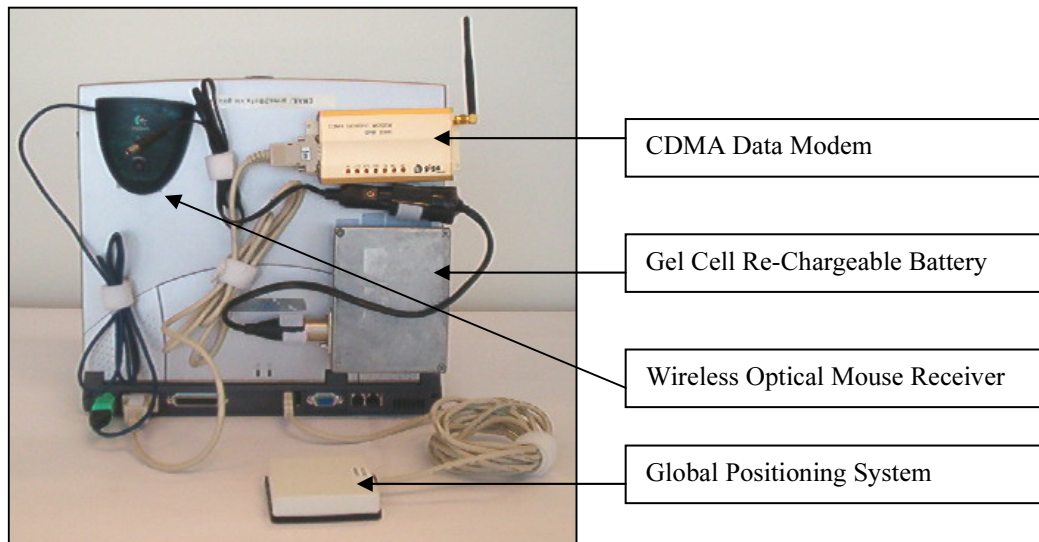


Figure 1 - Complete ARMS Kit

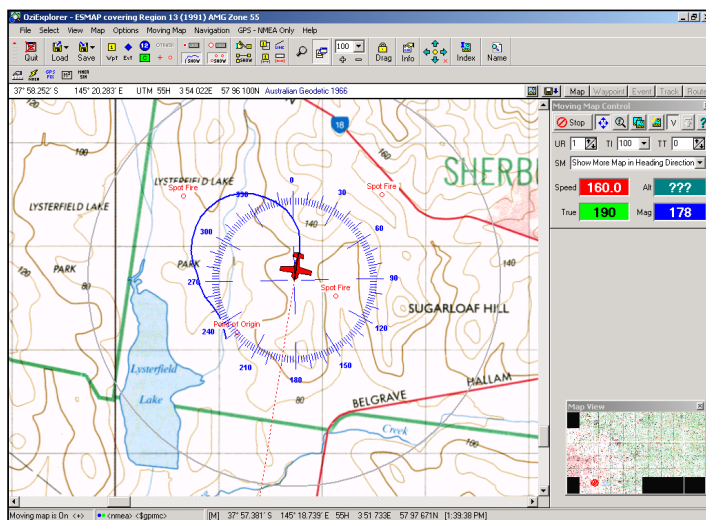


Figure 2 - Ozi Explorer Screen View (Simulated GPS Communication)

CONDITIONS OF USE

AIRBORNE FIRE MAPPING SYSTEM

Conditions of Use

The ARMS kit is not designed for navigation purposes.
The ARMS kit is not to be used as a personal computer.

Unauthorised software or material is not to be loaded onto the ARMS kit.
Users must comply with the CFA and DSE Information Technology Usage Policies and Procedures.

Configuration Settings

The Configuration settings in Ozi Explorer and the laptop computers have been set in each ARMS kit. These settings **must not** be changed unless instructed to do so by the State Aircraft Unit.

It is vitally important that all ARMS operators adhere to these instructions as changing the settings may render the Kit unserviceable.
The State Aircraft Unit will be responsible for the distribution of configuration file updates.

OZI EXPLORER

The Following information has been taken from the Help/Conditions of Use section of Ozi Explorer version 3.95. It is recommended that users of Ozi Explorer software familiarise themselves with these conditions.

Conditions of Use

Ozi Explorer is provided for entertainment and experimentation purposes only, it is not intended as a primary source of navigation or as the primary means of piloting and guiding of vehicles. Always rely on your own navigational skills and official maps or charts before making a decision on any actions you take.

License Conditions

A registered or purchased copy of Ozi Explorer may either be used by a single person who uses the software personally on one or more computers, or installed on a single work station used non simultaneously by multiple people, but not both. This is not a concurrent use license.

You may access the software through a network, provided that you have registered or purchased an individual copy for each work station that will access Ozi Explorer through the network regardless of whether they use Ozi Explorer at different times or concurrently.

HOW THIS MANUAL IS WRITTEN

Mouse use

LEFT Click

The word **CLICK** refers to the action of clicking on the LEFT mouse button the indicated amount of times.

RIGHT Click

The word **RIGHT CLICK** refers to the action of clicking on the RIGHT mouse button the indicated amount of times.

Numbered Lists

Contain actions that you need to perform, eg.

1. Do this first
2. Do this second
3. Do this third

Note

Any tips or important things to note will be indicated as shown below:

Note: This is an important thing to note.

BATTERY USE

ACER Computer Batteries

In operational use these batteries will power the laptop and GPS for 2 to 2.5 hours.

Charging the Acer Battery

When the battery is charging a small battery icon will appear in the tool bar located at the bottom right hand of the screen. Left Clicking on the battery icon will enable you to view the percentage % of battery charge and time remaining.

Gel Cell Battery

The Gel Cell Battery pack will provide approximately 1 hours transmission power to the CDMA Modem.

Charging the Gel Cell Battery

The Gel Cell Battery can be recharged using the 4 pin AC Charger provided. The Battery should be charged for approximately 12 hours or overnight.

DO NOT connect the battery to the CDMA Modem until you are ready to dial up the CFA Network and transmit the data. Doing so will only **DRAIN** the Gel Cell Battery Supply.