


## OPENING OZI EXPLORER

Once the ARMS kit is running, there are two ways to open the Ozi Explorer Program. They are outlined below.

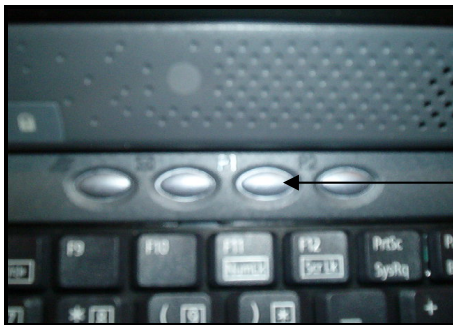


1. Locate the Shortcut to OZI Explorer ICON on Desktop with the Mouse



2.  Double Click Mouse on the OZI Explorer Icon

**OR**




3. **Press P1 Key**  
Pre-programmed launch key  
(Located above the F11 /F12 Keys)

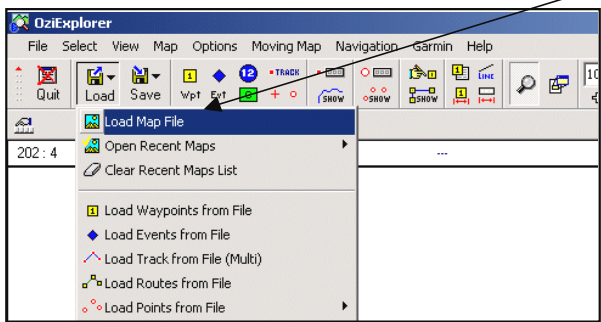
**Figure 12 - Launching Ozi Explorer**


# LOADING A MAP

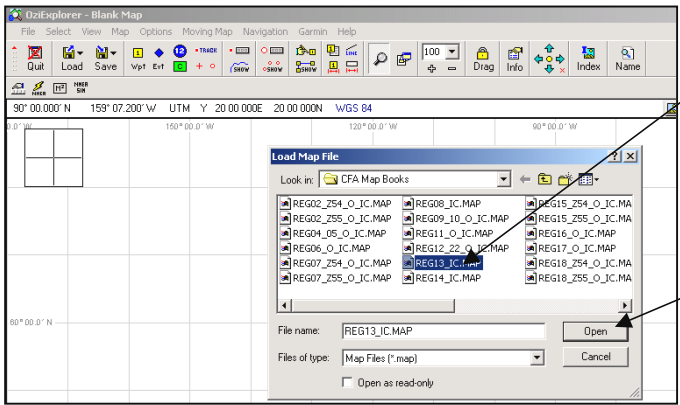
The Last map used will be displayed on screen when the program opens. If an alternate map is required complete the following steps.



1.   
Click Mouse on Load Icon



2.   
Click Mouse on Load Map File. If the Map Folder does not open, Click on MAPS and select the required maps folder.  
Click on that folder to open it.



3.   
Double Click Mouse on the Selected


OR   
Click Mouse on the selected then Click on OPEN

Figure - 13 Loading a Map

# STARTING COMMUNICATIONS WITH GPS

There are various ways to start communications with the GPS; the following two have been pre-programmed into the kit.

1. Press **F4** Function Key (Located above the No 2 Key).  
*This will automatically activate communication between Ozi Explorer and the GPS. **OR***
2. Press **F2** Function Key (Located above the No 2 Key) to show the Moving Map control.
3. Click on the Start / Stop Button to activate communication to the GPS.

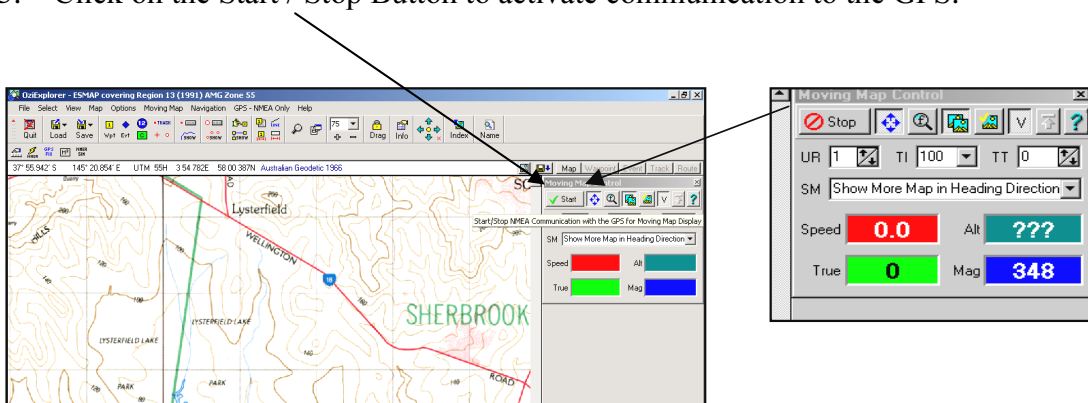


Figure 14 - Activating the GPS

**Note:** If the GPS does not achieve a fix within one (1) minute of activation stop the communications with the GPS. Restart the GPS by pressing the **F4** Key or clicking on the **START/STOP** Button indicated below.

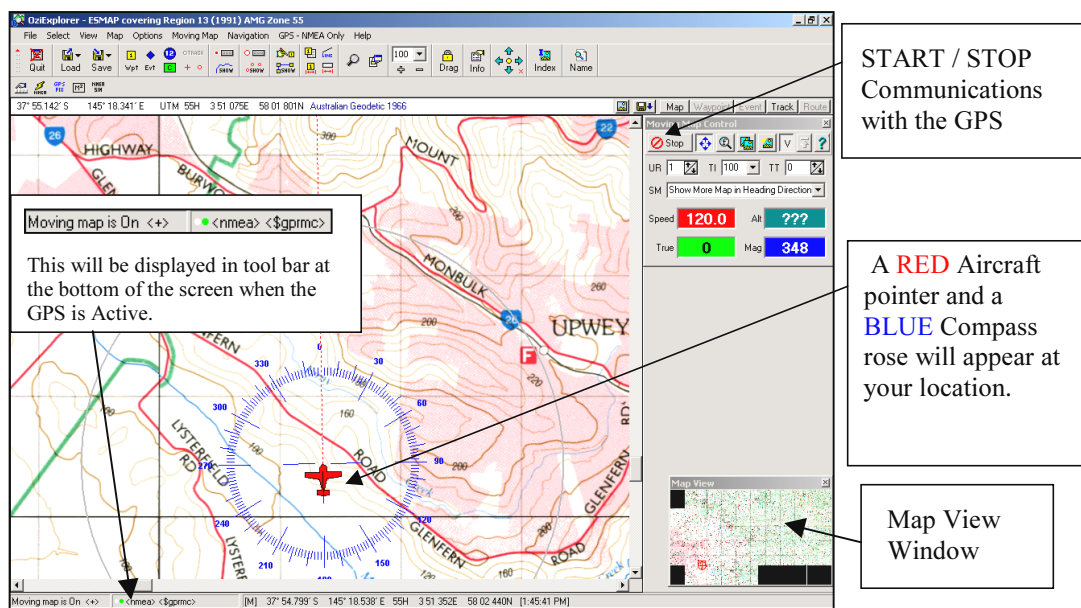


Figure 15 - Ozi Explorer Screen View

## SCROLING AND MOVING WITHIN THE MAP

The following Keys will assist you to move your cursor on the loaded map.

<b>KEY</b>	<b>FUNCTION</b>
<b>PAGE UP</b>	Increase the Zoom
<b>PAGE DN</b>	Decrease the Zoom
<b>UP ARROW</b>	Moves to Top of the Map
<b>DOWN ARROW</b>	Moves to Bottom of Map
<b>LEFT ARROW</b>	Moves to Left of Map
<b>RIGHT ARROW</b>	Moves to Right of map

**Note:** Holding Down these keys will continually move the cursor or increase the Zoom.  
Alternatively you may click the mouse, (Hold and Drag) and the map will move in the direction you choose.