

CREATING A TRACK

On arrival at the fire determine start point for the fire Plot.

1. Press **F 12** Function Key **Track 1 Quick Clear** (Located near the 0 Key).

This will automatically clear the map of all previous tracks

2. The Press **F 4** Function Key **Start/Stop GPS Communication** (Located near the 4 Key)

*Press **F 4** Can be used to Stop / Start the communication with the GPS.*

3. When the Plot is complete, Stop the plot by Pressing the **F 4** Function Key
Or
Click on the **START / STOP** button located on the moving map Control.

Noting the Date / Time

After completing the plot of the fire the operator must save the track file using the most accurate **DATE** and **TIME** of the last track file observation.

If for any reason the track cannot be saved immediately the operator must note the APPROXIMATE DATE / TIME of the last observation in the track file.

This time must then be used to create the file name when saving the track at a later time.

Note: This time is extremely important to calculate Fire Perimeter data in the IMT (Incident Management Team) and for post fire investigation activities.

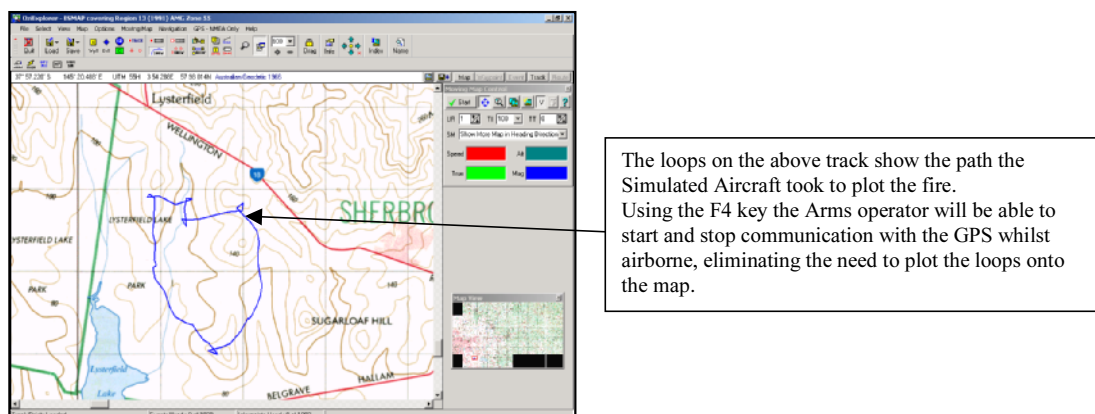


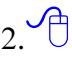
Figure 16 - F4 Key START/STOP GPS

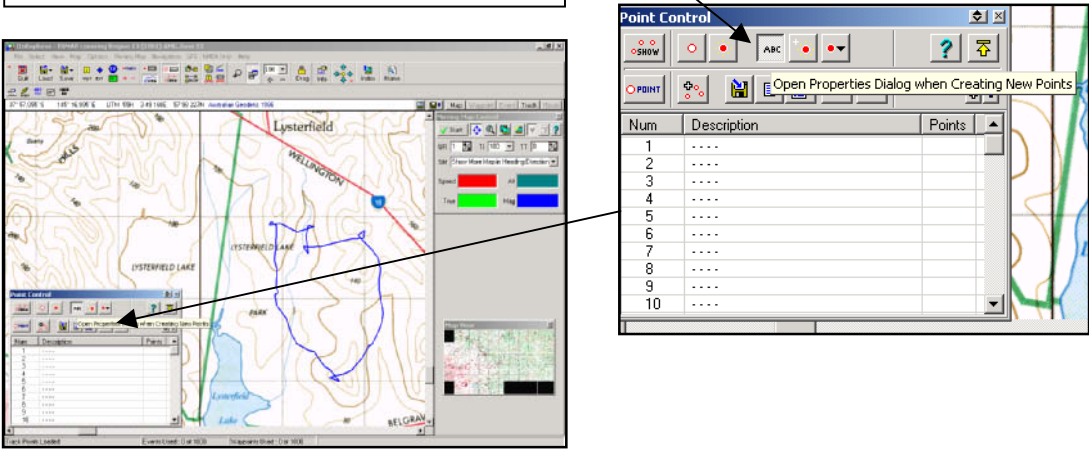
CREATING POINTS


Points are Geo Referenced marker's which are used to indicate locations of interest eg: Spot Fires, Point of Origin.

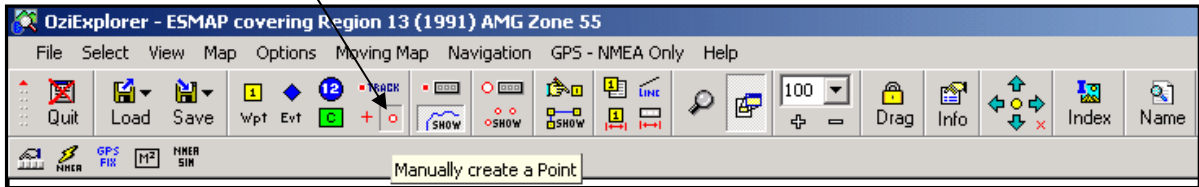
To create a point with a dialog box attached you must first open the Track Control Window.


1. Press **F7** Function Key to Open the Point Control Window.

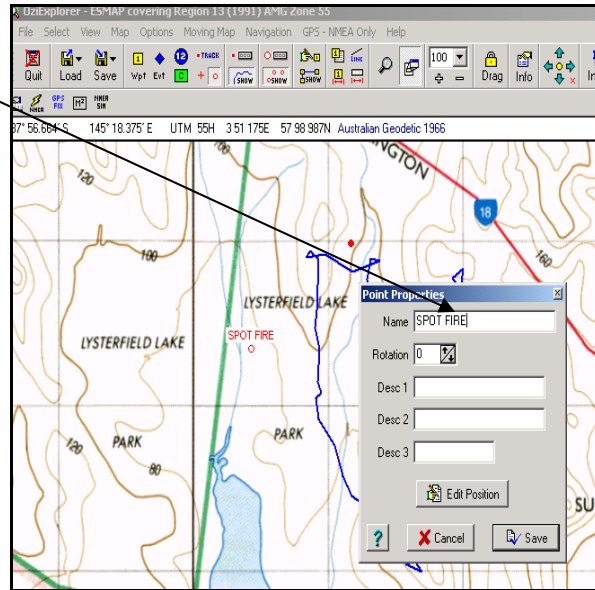
2.  Click Mouse on the ABC Button.
This activates the Point Properties Dialog Box
Press **F7** to close the Point Control Window.





3.  Click Mouse on Manually Create a Point.

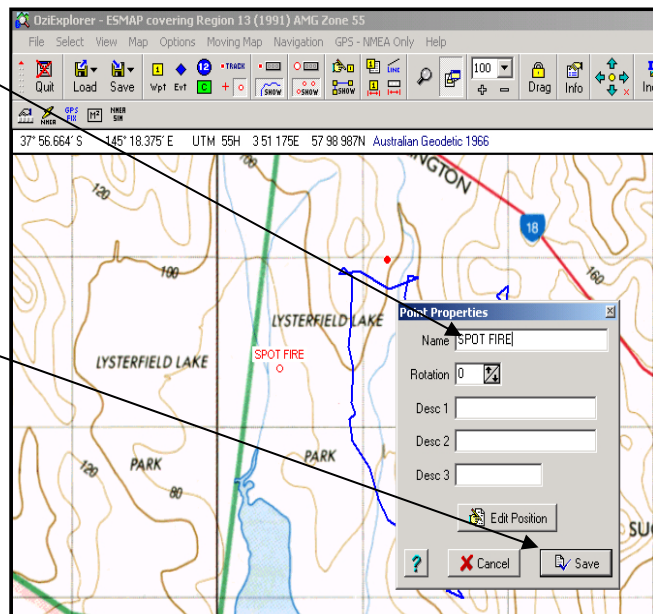


4.  Position the point cursor on the map position required and Click the mouse. This will place the point on the map and open a Dialog Box.



5.  Complete the Dialog Box, with a description eg: Spot Fire.

6.  Click Mouse on **Save** or Press the **Enter** key



Noting the Date / Time

After completing the plot of the fire the operator must save the Points file using the most accurate DATE and TIME of the last track file observation.

If for any reason the points file cannot be saved immediately the operator must note the APPROXIMATE DATE / TIME of the last observation in the file.

This time must then be used to create the file name when saving the points file at a later time.

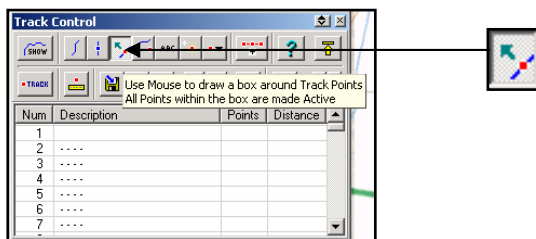
Note: This time is extremely important to calculate Fire Perimeter data in the IMT (Incident Management Team) and for post fire investigation activities.

EDITING TRACKS AND POINTS

There may be a need to edit a track or a point that was incorrectly plotted onto the map. Tracks and Points can be edited and deleted using the Track and Point Control Windows.

Editing or Deleting a Track

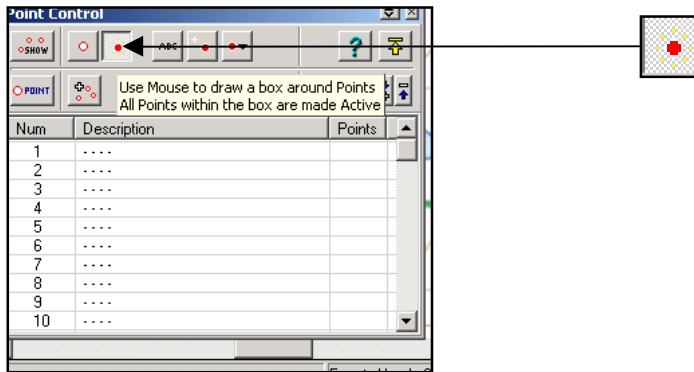
1. Press **F6** Function Key, this will open the Track Control Window.
2. Mouse Click on the "Use Mouse to draw a box around the Track Points-All Points within the box are created active"



3. Close the Point Control Window by Pressing the **F6** Function Key
4. Your mouse cursor will now be a thin cross hair
5. CLICK , HOLD and DRAG the Cursor around the track area you wish to edit.
6. Release the LEFT mouse button and all the points in the selected active box will be created active.
The track points will now be visible in red.
4. Holding down the Shift Key Click the mouse on a red Track Point, HOLD and DRAG the Point to its required position.
5. To Delete the Track Point RIGHT CLICK the mouse and a drop down box will appear. Select Delete or Delete and Split Track as required.

Editing or Deleting a Point

1. Press **F7** Function Key, this will open the Point Control Window.
2. Click Mouse on the "Use Mouse to draw a box around Points All points within the box are made active"



3. Close the Point Control Window by Pressing the **F7** Function Key.
Your mouse cursor will now be a thin cross hair.
4. CLICK and HOLD the mouse button in, DRAG the Cursor around the track you wish to edit.
5. Release the LEFT mouse button.
All the selected points will be activated (i.e. the points will change colour from Red with White centre to completely red).
6. Holding down the Shift Key Click the mouse on a Point, HOLD and DRAG the Point to its required position.
7. To Delete the Point Press the **SHIFT** key, place the cursor over the active point and RIGHT CLICK the mouse. *A drop down box will appear.* Delete the Point as required.